

Virtual Design and Verification of Medical Devices

Karen Kaehler, Technology Strategy Manager

January 19, 2012



UNIVERSITY OF MINNESOTA

Driven to DiscoverSM

Market Need



\$24 M - \$100 M
2-7 YEARS

\$2 M
1-2 YEARS

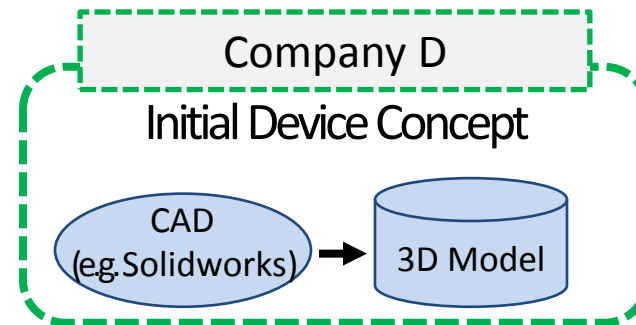
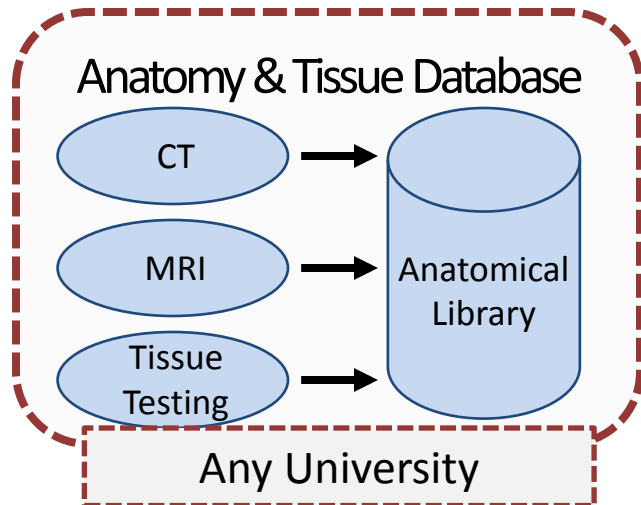
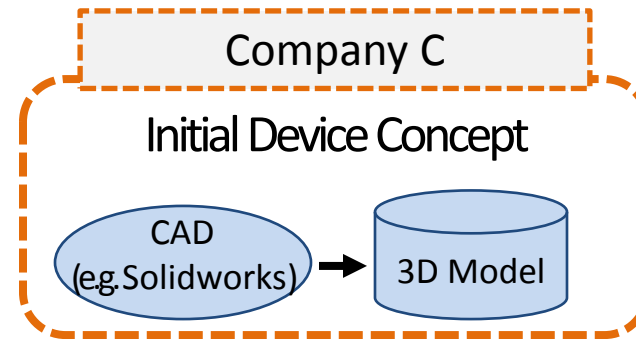
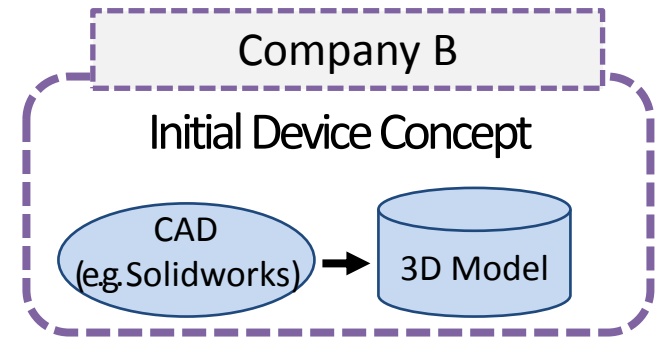
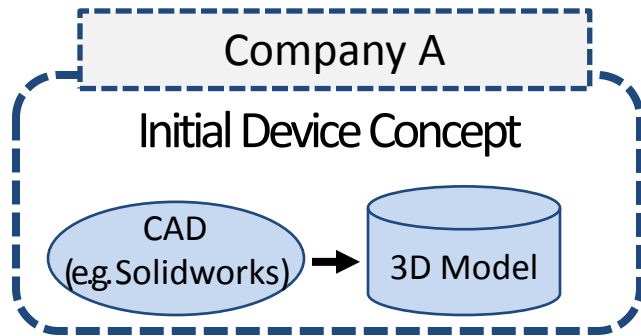
\$3 M
3-5 YEARS

Standardized, validated tools for early development and testing to reduce cost and shorten time to market

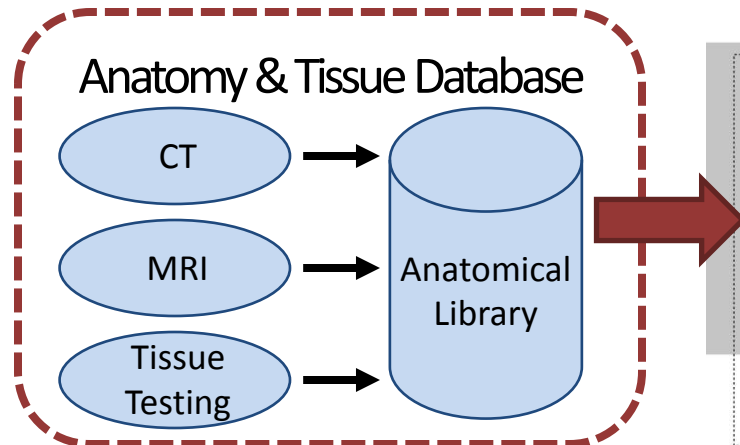
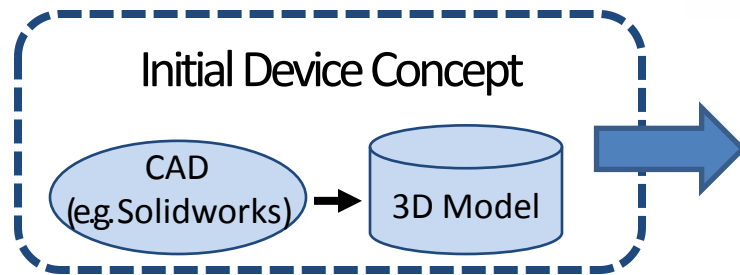
Image: freepik.com

UNIVERSITY OF MINNESOTA
Driven to DiscoverSM

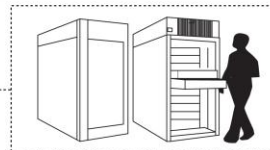
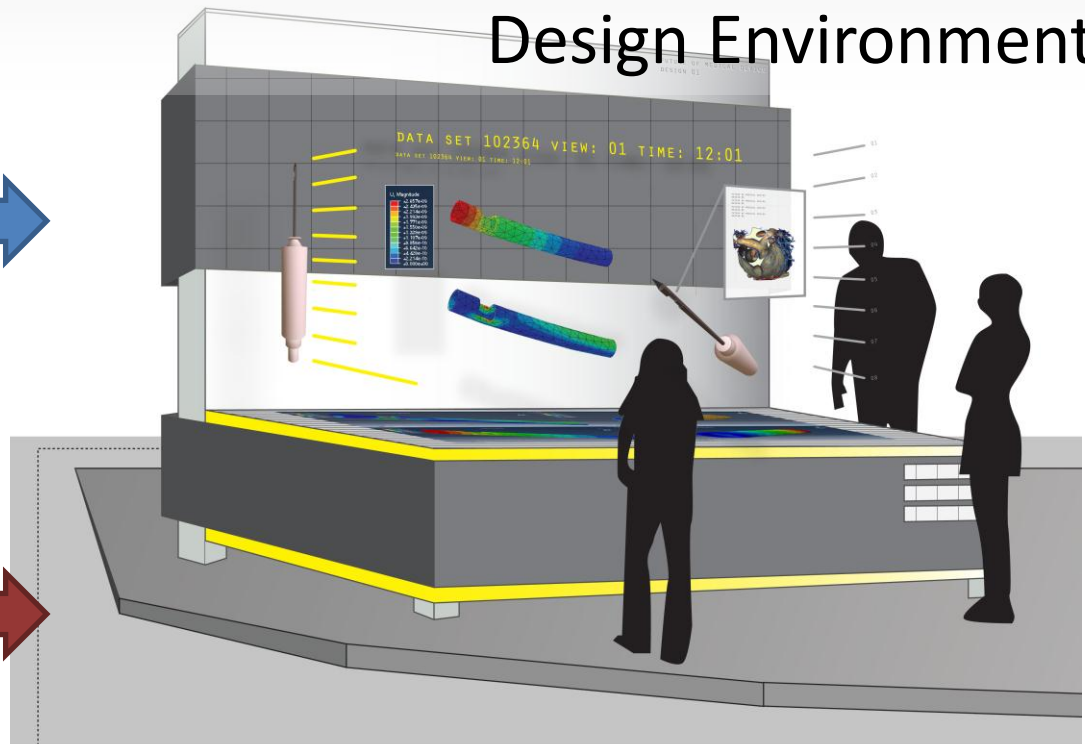
Technology Summary



Technology Summary



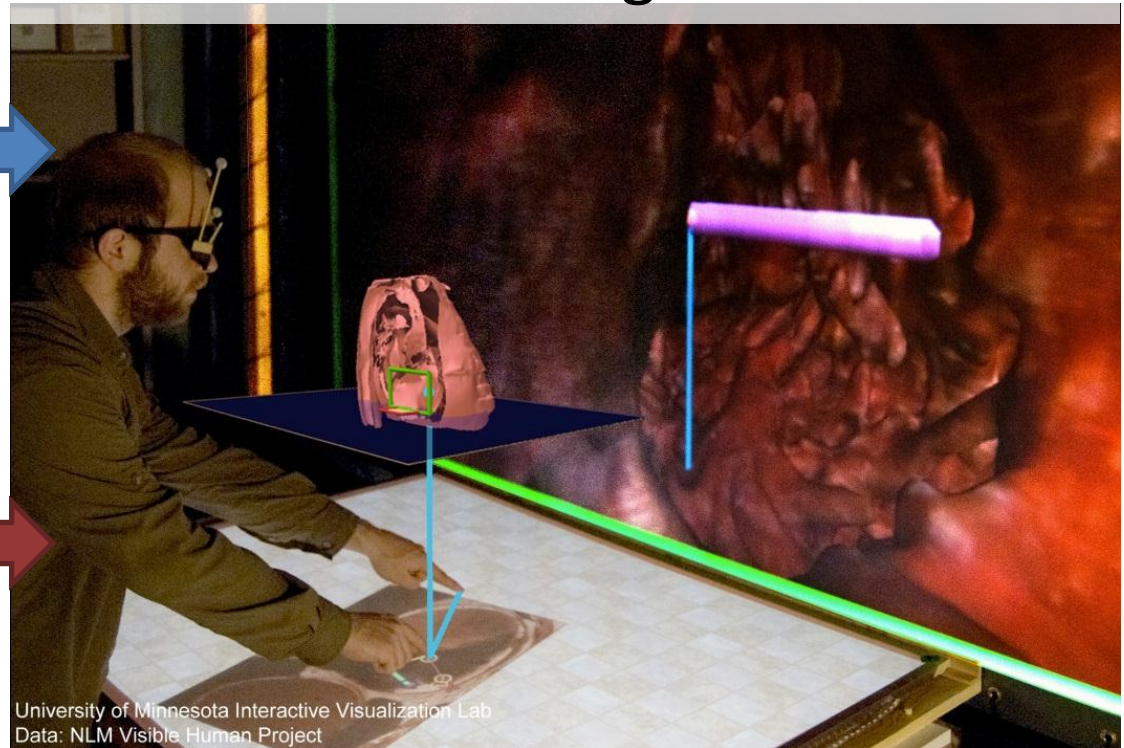
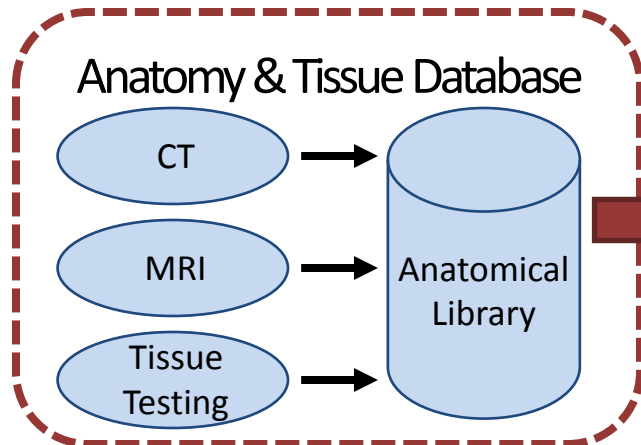
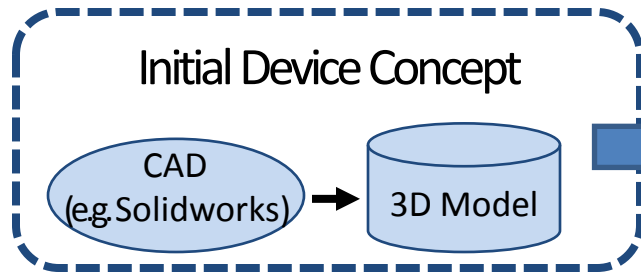
Immersive Visualization and Design Environment



REMOTE CONNECTION TO
SUPERCOMPUTING FACILITY

Technology Summary

Immersive Visualization and Design Environment



Advantages

- Allows extremely rapid, iterative, simultaneous testing of numerous design variables
- Tests virtual devices in multiple anatomies and physiologies
- Reduces run times from hours and days to just seconds and minutes
- May reduce need for animal and even human trials



Image: booneheart.com

Development Status

- Platform technology: integrated development environment

Next Steps:

- Beta test planned with major medical device manufacturer
 - Seeking additional commercial partners for testing and collaborative channel development
-
- IP Status: Patent application in process



Arthur G. Erdman, Ph.D.
Mechanical Engineering,
Director, Medical Device Center



Daniel Keefe, Ph.D.
Computer Science & Engineering